

# The Permanent Solution



# Gutter Helmet®

**NEVER CLEAN YOUR GUTTERS AGAIN®**

[www.gutterhelmet.com](http://www.gutterhelmet.com)

# Why You Need Gutter Helmet®

## With Gutter Helmet® Installed

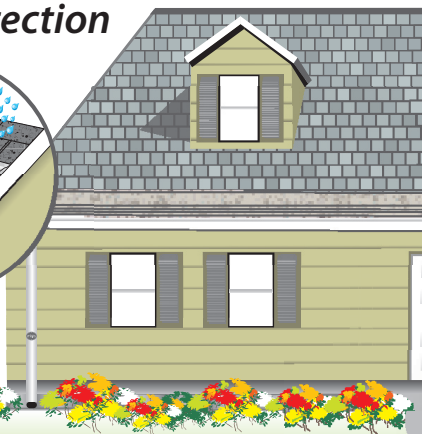
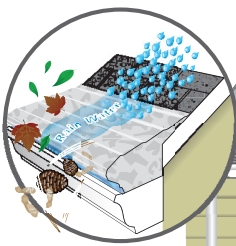
With Gutter Helmet®, the #1 gutter protection system in the world, you'll have year-round protection and peace of mind.

- ✓ Prevents Clogged Gutters
- ✓ Can Handle Twice the Heaviest Rainfall Ever Recorded
- ✓ Installs Over New or Existing Gutters
- ✓ Gutters Can't Clog or Overflow
- ✓ Properly Manages the Flow of Rainwater
- ✓ Keeps Leaves, Needles, Sand, Dirt, and Debris Out
- ✓ Deters Animals, Birds, and Insects From Nesting
- ✓ Directs Rain Water Where You Need It
- ✓ Guaranteed For Life

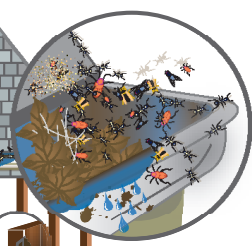
## Without Gutter Helmet®

- ✗ Sagging and Leaking Gutters
- ✗ Clogged Gutters & Downspouts
- ✗ Wet Basement/Crawl Space
- ✗ Mold and Mildew
- ✗ Insect & Bug Infestation
- ✗ Nesting Animals & Birds
- ✗ Rotted Rafters & Soffits
- ✗ Rotted Wood & Siding
- ✗ Cracked Foundations
- ✗ Destroyed Plantings
- ✗ Landscape Erosion
- ✗ Torn Away Gutters
- ✗ Stained Gutters
- ✗ Dirty, nasty chore
- ✗ Injuries from falling off ladders

### 4-Season Protection



### What's in your gutters?



# **Gutter Helmet®**

**NEVER CLEAN YOUR GUTTERS AGAIN®**

## **PermaLife™ Finish**

Hi-performance, anti-corrosive, multi-layer paint finish  
(protects against chalk/fade, salt water & acid rain)

## **Textured / Ribbed Surface**

Increased surface tension & tensile strength  
(handles the heaviest rainfall, snow loads & extreme winds)

## **Nose Forward Design™**

Precise engineered opening  
(water enters, debris & animals stay out)

## **Premium Engineered Bracket**

Reinforced aluminum alloy  
(multi-function, anti-corrosive load bearing system)

## **The Best Engineered System On The Market.**

Patented Nose-Forward™ Design

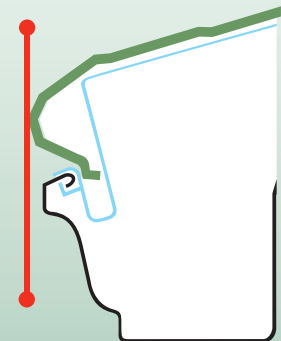
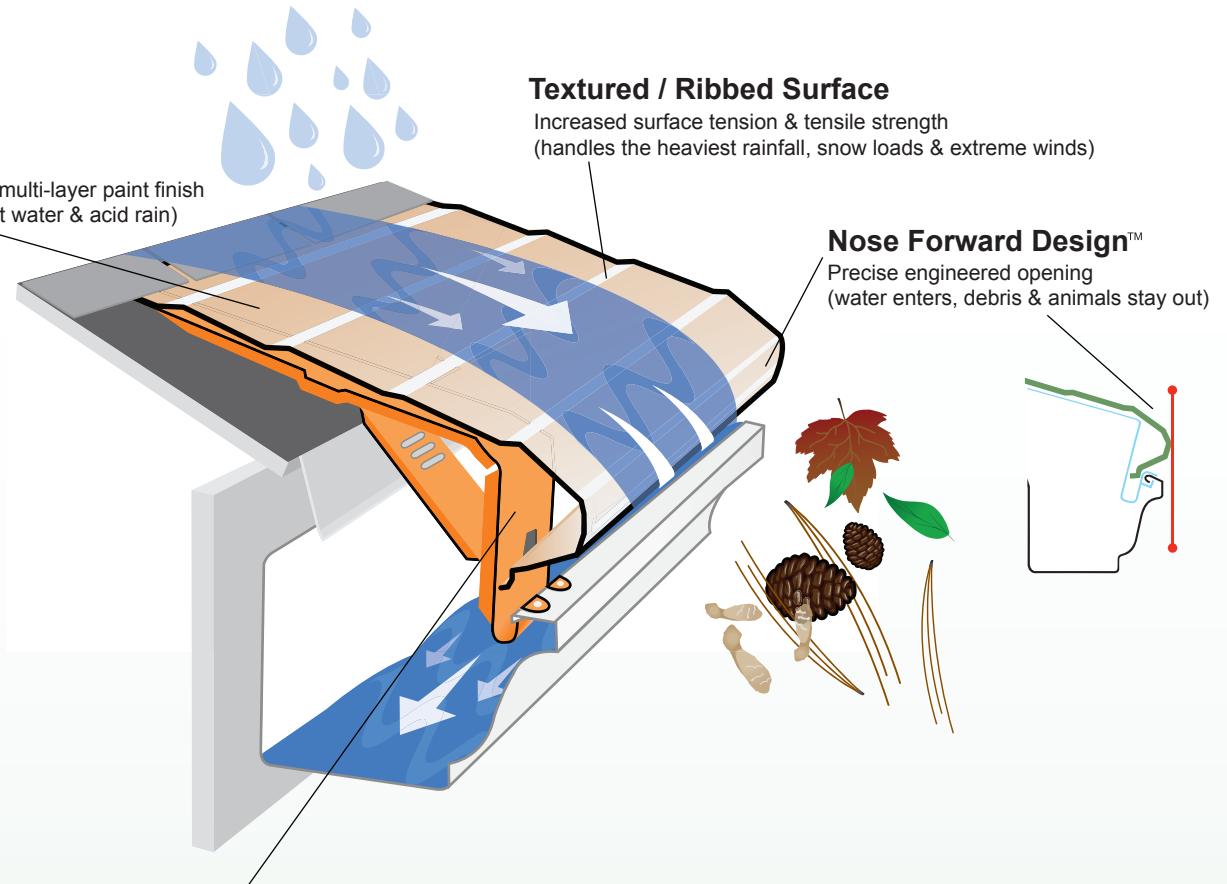
Patented Textured Surface

Permalife™ Coating

Horizontal Stiffening Ribs

Heavy Gauge Metal Support Brackets

Patented Nose-Forward™ Design



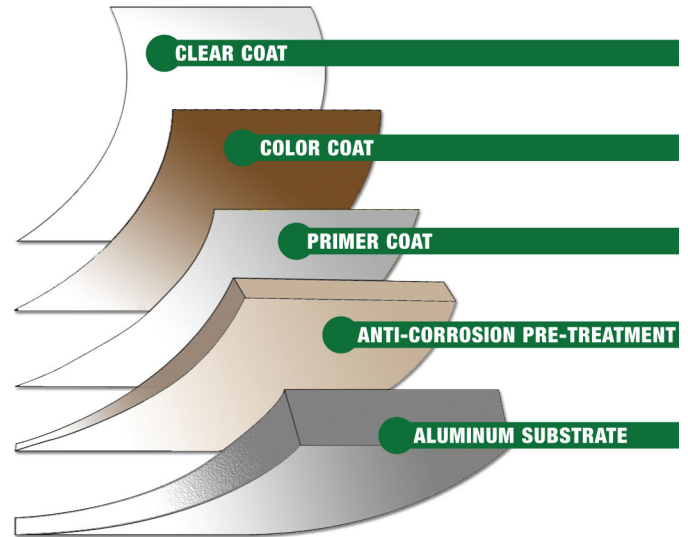


# The Permanent Solution

America's Most Trusted Brand for Over 30 Years.

## PermaLife™ High Performance Coating

PermaLife™ high performance coating is guaranteed not to crack, chip, or peel and resists chalking and fading for the life of the product.



PermaLife™ multi-layer process



**COMES WITH A LIFETIME  
TRANSFERABLE WARRANTY**



# NEVER CLEAN YOUR GUTTERS AGAIN®

# Gutter Helmet® Is Only Installed By Factory Trained Professionals.

- Nationally known, locally owned
- We live and work in the community
- No sub-contractors
- Fully insured
- 100% satisfaction guarantee



"Before we had Gutter Helmet® installed Doug had to clean the gutters at least five time a year."

*Doug & Cathy S. Minneapolis, MN*

"We had a mold problem...one of my children had a terrible cough she couldn't get rid of. Thanks to Gutter Helmet®, we don't have a mold problem anymore. I can't thank you enough!"

*Wes & Marcela P. San Antonio, TX*

"I've never had to clean a gutter in the past two and a half years. I prefer to spend my time fishing and playing golf rather than climbing up and down a ladder."

*Chris C. Seattle, WA*

We couldn't use the backyard because of the mosquitos...we also had an awful bug problem in the house...we called the exterminator...he recommended we get Gutter Helmet®...now we don't have a problem anymore."

*Charlie & Betsy K. Atlanta, GA*

***Four season protection  
wherever you live.***





## What is Gutter Helmet®?

Gutter Helmet® is a patented gutter protection system that installs right over your existing gutters. It blocks leaves, pine needles and other debris out of your gutters while allowing rainwater to flow into your gutters freely. This revolutionary system protects your home from the harmful effects of clogged gutters, built up of rainwater, and insect infestation.

Gutter Helmet® guarantees that **you'll never have to clean your gutters again.** You'll never have to worry about getting on that ladder again.

Gutter Helmet® is the superior gutter protection system on the market. Gutter Helmet is engineered to last a lifetime. That's why we back it up with a lifetime warranty.

More homes are protected by gutter helmet than by any other gutter protection product!

## How does Gutter Helmet® work?

Gutters become useless when they become clogged with leaves and debris.

Clogged gutters can rot and damage your home, lawn, basement or foundation and landscaping.

Gutter Helmet's® secret is the **principle of surface tension.** Hold a glass under a running faucet and you can see surface tension at work. The water flows around the outside of the glass. Similarly, water clings to your Gutter Helmet as it flows down the roof, flowing freely into your gutters. **Pine needles, leaves, and other debris, however, fall to the ground below.** Your gutters stay open and clear, with no work on your part!

## What benefits can I expect with Gutter Helmet®?

The benefits of installing Gutter Helmet® over your gutters are many:

- Keeps your gutters clear from clogs;
- Ensures that dirt, leaves, needles, and debris roll off of your roof and stay out of your gutters;
- Deters infestation of birds, animals, and insects;
- Protects your home's foundation and landscaping by properly directing rainwater away from your home;
- Protects against harmful mold, mildew and rot caused by water gathering in your gutters and seeping under your fascia and eaves.
- And perhaps most importantly, Gutter Helmet® keeps you off of that dangerous ladder!

## Why should I choose Gutter Helmet®?

Easy — because you'll never have to clean your gutters again! You **avoid the stress of cleaning gunk-filled gutters** yourself or hiring someone to do it for you.

No more need for you or someone else to risk climbing a shaky ladder.

You avoid overflowing gutters, which can lead to rotting fascia boards and soffit, damaging your foundation, basement, crawl spaces and walls. Never again will rainwater destroy your landscaping by pouring off your roof.

**So, stop worrying about your gutters,** and start enjoying the peace of mind that a maintenance-free Gutter Helmet® system provides.



### **How much does Gutter Helmet® cost?**

Installation cost depends on a few factors:

- the number of stories of your home;
- the need for special equipment to perform the installation (due to the lay of the land or other variables);
- the condition of your roof; any fascia repair and replacement;
- the overall length of all of your gutters; and
- the number of corners on your home.

After inspecting your home, your Gutter Helmet® technician will provide a firm quote. Request a no-obligation quote today.

All installations include an inspection and tune-up of your existing gutters — cleaning, sealing, re-pitching and adding hangers as needed.

### **Will my roof warranty be affected by installing Gutter Helmet®?**

No. Our installation methods have been evaluated and approved by the major roofing manufacturers.

Gutter Helmet® is installed professionally by experts, using the industry's highest quality poly-butyl sealant.

You can rest easy knowing your roof and your roof warranty are safe with us.

### **How does Gutter Helmet® compare to gutter screens and other gutter protecting products?**

The big difference is that other gutter protection products, like screens or grates, have vertical slots, louvers or other openings. No matter what, these openings allow leaves and debris to clog your gutters.

On the other hand, Gutter Helmet's® unique, multi-patented design has no vertical openings that can allow debris to enter your gutters. Gravity causes leaves and debris to fall harmlessly to the ground, while water surface tension causes water to flow around the exclusive cover design and back into your gutters.

### **The pitch of my roof is very steep. Will water pour over the Gutter Helmet® bypassing the gutters?**

No. Gutter Helmet® is engineered to work with any roof despite the degree of pitch, from flat to vertical. Water will easily flow into your gutters, regardless of the pitch of your roof.

### **How strong is Gutter Helmet®?**

Very. Gutter Helmet® has a patented horizontal-rib design, engineered specifically for strength. Gutter Helmet® is the only system available that installs over reinforced heavy gauge brackets; these brackets **actually strengthen and support your gutters.**



### **How much rain can Gutter Helmet® handle?**

Gutter Helmet® can support up to 22 inches of rain per hour. That's double the amount of rainfall that has ever been recorded by the U.S. Weather Bureau.

### **Can Gutter Helmet® handle heavy snows?**

Gutter Helmet® is engineered to handle the heaviest snowfalls. Thousands of installations in such snowy states as Ohio, New York, Massachusetts and New Hampshire are witnesses to the load-bearing capability of our system.

### **What about frozen gutters and ice dams?**

In colder months, clogged gutters can become frozen and turn into a solid block of heavy ice and debris. This can cause gutters to buckle and pull away from your house.

An ice dam is a buildup of ice under the roof edge. The ice eventually creeps up under the shingles and warps them. Further damage can lead to rotting roof rafters and interior leaks. Faulty insulation and or poor attic ventilation is the root cause of ice dams.

Certain Gutter Helmet® dealers can install a self-regulating heat cable that can mitigate ice dams and frozen gutters. Additionally, Gutter Helmet's® patented brackets are specifically designed to carry and conceal the heat cable. Ask your local dealer about this special service.

### **How is Gutter Helmet® installed?**

Our expert installers first clean, seal, check and adjust the alignment of your gutter system, where necessary. Then we custom-fit your Gutter Helmet® to your home with heavy gauge, reinforced support brackets. Gutter Helmet® panels are individually prepared and secured over your full-sized gutters.

Our installers mount your Gutter Helmet® under or over your roof shingles, depending on the construction of your roof. After completion and final inspection, your home and your property are restored to their original condition. Generally, **we can complete your installation in one day.**

### **What is the warranty for Gutter Helmet®?**

We warranty Gutter Helmet® for life.

### **Must I clean my gutters prior to my installation appointment?**

No. When your Gutter Helmet® installers arrive, they'll first clean out any leaves and debris remaining in your gutters. This gutter cleaning is complimentary, and is the last you'll ever need.